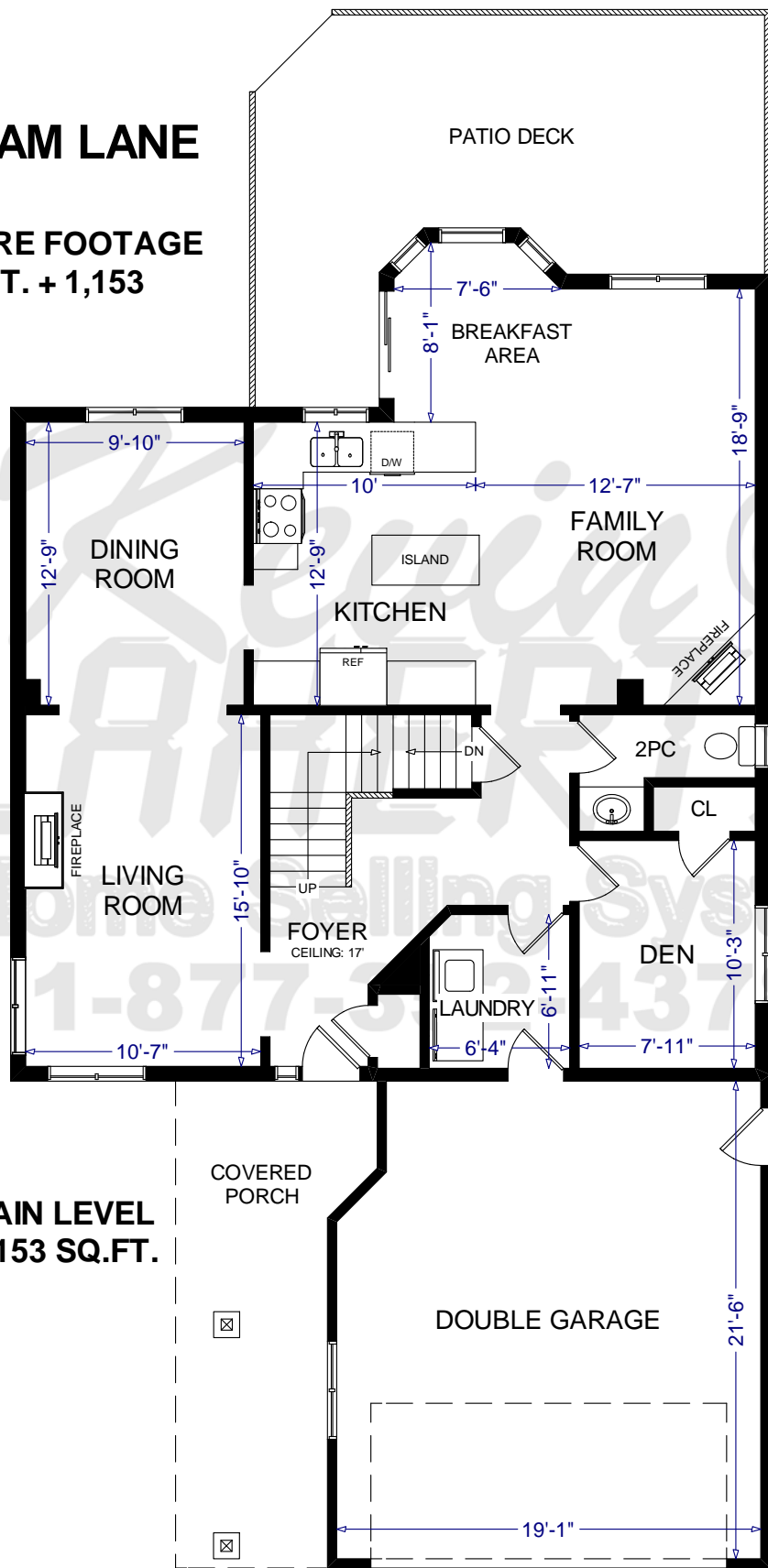


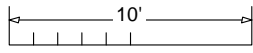
8 BALSAM LANE

TOTAL SQUARE FOOTAGE
1,890 SQ.FT. + 1,153



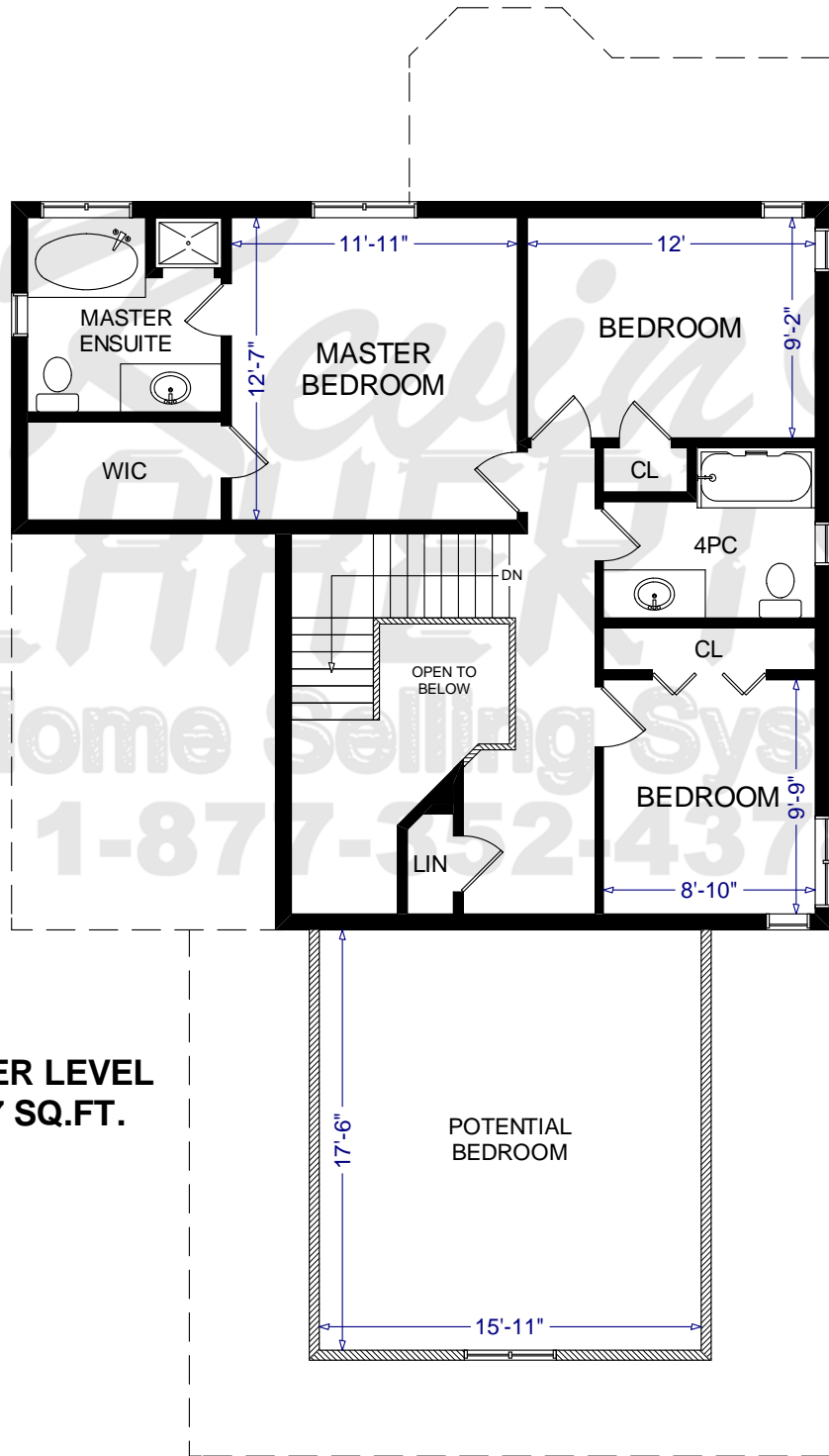
MAIN LEVEL
1,153 SQ.FT.

GARAGE
427 SQ.FT.

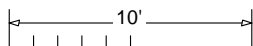


iPro Realty Ltd. Brokerage and Kevin Flaherty assume no responsibility for accuracy of the information provided. All details and measurements are subject to verification by the purchaser. Copyright 2009

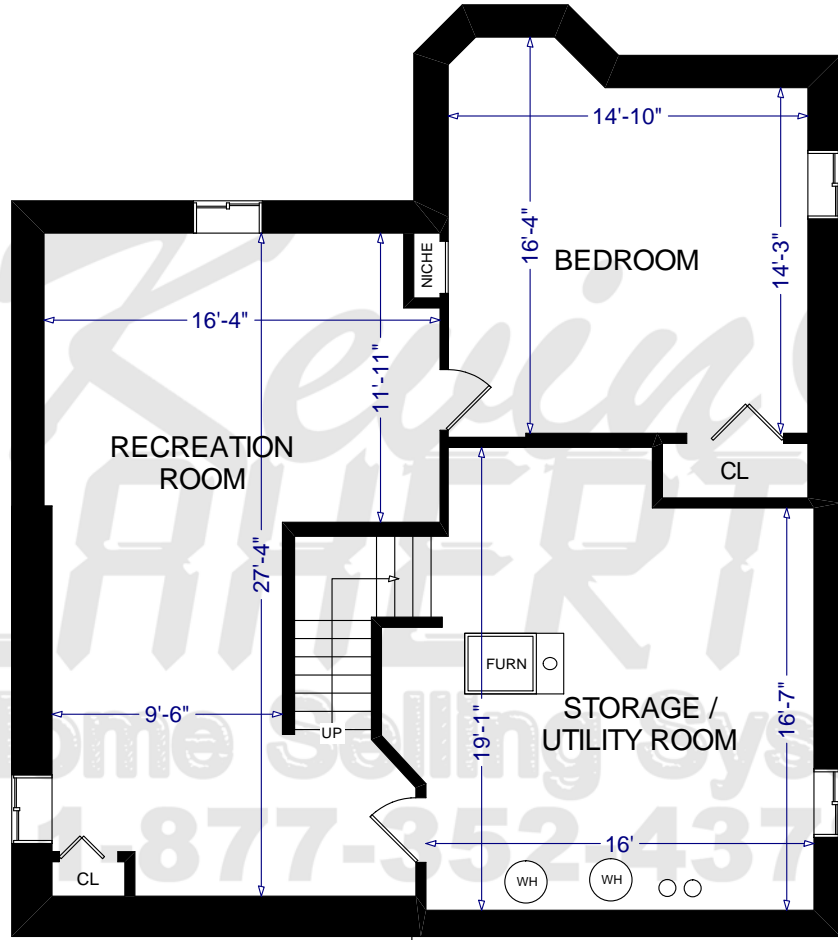
8 BALSAM LANE



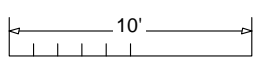
**UPPER LEVEL
737 SQ.FT.**



8 BALSAM LANE



LOWER LEVEL
1,153 SQ.FT.



iPro Realty Ltd. Brokerage and Kevin Flaherty assume no responsibility for accuracy of the information provided. All details and measurements are subject to verification by the purchaser. Copyright 2009