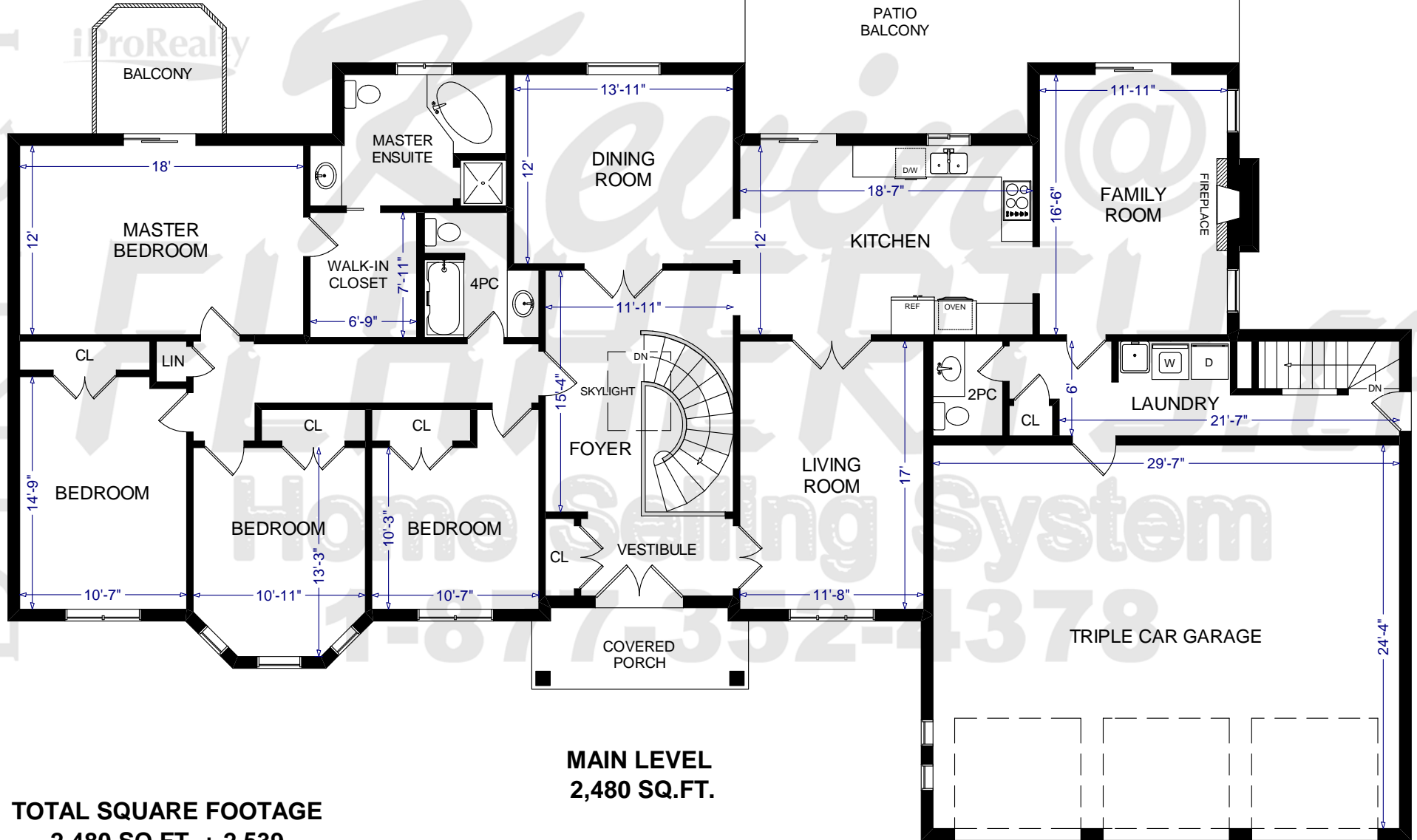


# 17 BAYBERRY ROAD

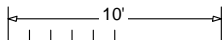


**MAIN LEVEL  
2,480 SQ.FT.**

**TOTAL SQUARE FOOTAGE  
2,480 SQ.FT. + 2,539**

**TRIPLE CAR GARAGE**

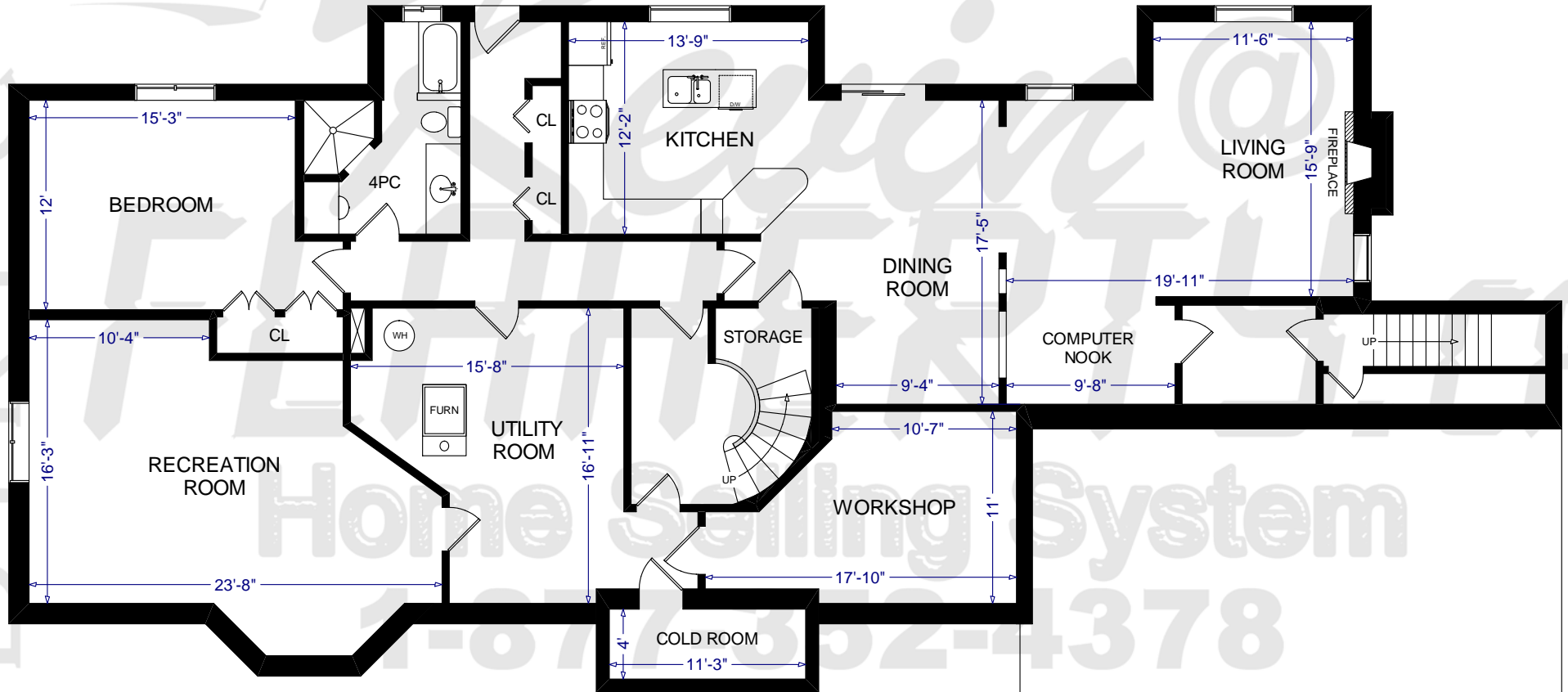
**GARAGE  
778 SQ.FT.**



iPro Realty Ltd. Brokerage and Kevin Flaherty assume no responsibility for accuracy of the information provided. All details and measurements are subject to verification by the purchaser. Copyright 2009

# 17 BAYBERRY ROAD

iProRealty



**LOWER LEVEL  
2,539 SQ.FT.**